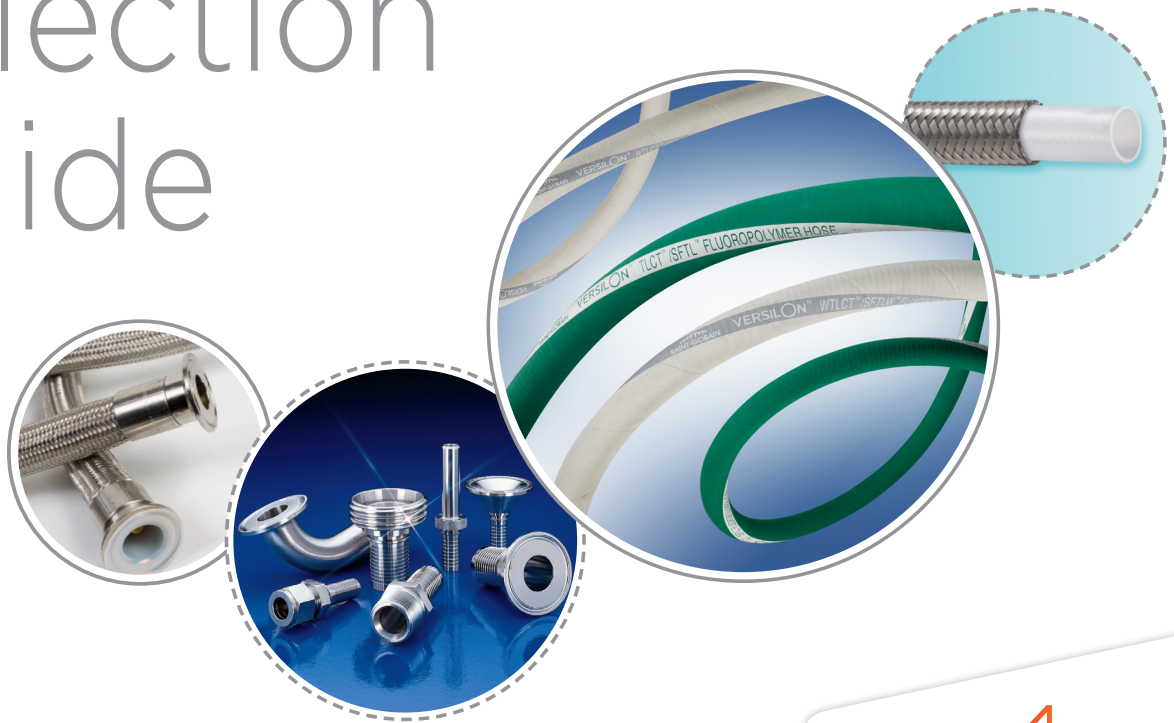


# Versilon™ Fluoropolymer Hose and Fitting Selection Guide



# Saint-Gobain Versilon™ Fluoropolymer Hose and Fittings

## Table of Contents

### Versilon™ Fluoropolymer Hose Styles

Rubber Covered Smooth ID Transfer Hose	p. 2
Stainless Steel Smooth ID Braided Hose	p. 3
Convolute ID Transfer Hose - Open Pitch	p. 3
Convolute ID Transfer Hose - Low Profile	p. 4

### Versilon™ Fitting End Connections

Sanitary	p. 5
Flanged Connections	p. 5
Male Cam & Groove	p. 6
Female Cam-Lock (Cam & Groove)	p. 6
Compression, O-ring and Vacuum	p. 6
NPT	p. 7
Unions, Female JIC	p. 7

### Versilon™ Adapters

p. 7

## Versilon™ Fluoropolymer Hose Styles

### Rubber Covered Smooth ID Transfer Hose

#### TLCT

Smooth I.D. FEP fluoropolymer lined EPDM rubber hose (green)

**Size range** : 1/2" to 4" I.D.  
**Temperature rated** : -40°F to +350°F

**End connections** : Permanent crimp style;  
Flare-Thru  
Consult factory for available sizes/styles



#### WTLCT

Smooth I.D. FEP fluoropolymer lined EPDM rubber hose (white)

**Size range** : 1/2" to 4" I.D.  
**Temperature rated** : -40°F to +350°F

**End connections** : Permanent crimp style;  
Flare-Thru  
Consult factory for available sizes/styles



#### TLCTCO

Smooth I.D. FEP lined EPDM rubber hose with "Convolute Outer" for improved flexibility

**Size range** : 3/4" to 2" I.D.  
**Temperature rated** : -40°F to +350°F

**End connections** : Permanent crimp style;  
Flare-Thru  
Consult factory for available sizes/styles



#### WTLCTPFA

Smooth ID, ultra pure unpigmented PFA lined white EPDM rubber covered transfer hose

**Size range** : 3/4" to 2" I.D.  
**Temperature rated** : -40°F to +350°F

**End connections** : Permanent crimp style;  
Flare-Thru  
Consult factory for available sizes/styles



## Stainless Steel Smooth ID Braided Hose

### TS

True bore smooth I.D.  
PTFE tube, 304 stainless steel braid reinforced hose

**Size range** : 1/8" to 1" I.D.

**Temperature rated** : -100°F to +450°F continuous;  
+500°F intermittent

**End connections** : Permanent crimp style



### TB

Anti-static (black) true bore smooth I.D. PTFE tube 304 stainless steel braid reinforced hose

**Size range** : 1/4" to 1" I.D.

**Temperature rated** : 100°F to +450°F continuous; +500°F intermittent

**End connections** : Permanent crimp style



### TD

1-1/2" version of TS with two 304 stainless steel reinforcing braids

**Temperature rated** : -100°F to +450°F continuous; +500°F intermittent

**End connections** : Permanent crimp style

### TSS

Platinum cured, extruded silicone covered 304 stainless steel reinforced PTFE smooth tube hose

**Size range** : 1/4" to 1" I.D.

**Temperature rated** : -100°F to +450°F continuous;  
+500°F intermittent

**End connections** : Permanent crimp style



### TDB

1/2" version of TB; two 304 stainless steel reinforcing braids

**Temperature rated** : -100°F to +450°F continuous; +500°F intermittent

**End connections** : Permanent crimp style

### TH

Anti-static (black) PTFE tube, 304 high density stainless steel braid reinforcement

Pressure rated for 5000 psi all sizes

**Size range** : 1/4" to 1" I.D.

**Temperature rated** : -65°F to +400°F continuous;

**End connections** : Permanent crimp style



## Convuluted ID Transfer Hoses - Open Pitch

### TWOB

Open pitch (white) PTFE helical convoluted I.D. hose; 316 stainless steel braid reinforcement

**Size range** : 1/2" to 4" I.D.

**Temperature rated** : -100°F to +450°F

**End connections** : Flare-Thru; flanged, female cam-lock and sanitary; Permanent crimp style



### TWOBHV

Vacuum rated 316 stainless steel braid reinforced version of TWOB Includes optional stainless steel support wire for improved vacuum and kink resistance

**Size range** : 2" to 4" I.D.

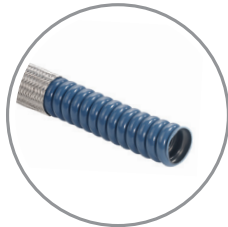
**Temperature rated** : -100°F to +450°F

**End connections** : Flare-Thru; flanged, female cam-lock and sanitary; crimp style



### TBOB

Anti-static (black) version of open pitch PTFE helical convoluted I.D. hose Shares sizes, temperature rating and end connections of TWOB



### TBOBHV

Anti-static (black) version of TWOBHV; shares sizes, temperature rating and end connections (not shown)

### TBOY

Anti-static (black) version of TWOY

**Size range** : 1/2" to 4" I.D.

**Temperature rated** : -40°F to +250°F

**End connections** : Flare-Thru; flanged, female cam-lock and sanitary; Permanent crimp style



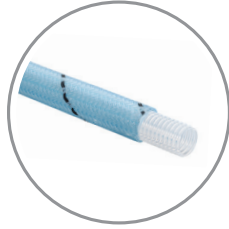
### TWOY

Open pitch (white) PTFE helical convoluted I.D. hose; U.V. stabilized large diameter (denier) polypropylene braid reinforcement

**Size range** : 1/2" to 4" I.D.

**Temperature rated** : -40°F to +250°F

**End connections** : Flare-Thru; flanged, female cam-lock and sanitary; Permanent crimp style



### TBOK

Anti-static (black) open pitch PTFE helical convoluted I.D. hose

**Size range** : 3/4" to 3" I.D.

**Temperature rated** : -40°F to +275°F

**End connections** : Flare-Thru; flanged, female cam-lock and sanitary; Permanent crimp style



### TWOK

Open pitch PTFE helical convoluted I.D. hose; PVDF (Kynar) braid reinforcement

**Size range** : 3/4" to 3" I.D.

**Temperature rated** : -40°F to +275°F

**End connections** : Flare-Thru; flanged, female cam-lock and sanitary; Permanent crimp style



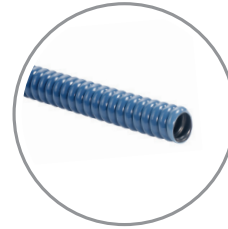
### TWOP/TBOP

Unbraided (white, TWOP) and anti-static (black, TBOP) PTFE helical convoluted I.D. hose

**Size range** : 1/4" to 4" I.D.

**Temperature rated** : -100°F to +450°F

**End connections** : Permanent crimp style; Flare-Thru; flanged, female cam-lock and sanitary  
Also available with "cuffed" ends to slip over pipe or tube O.D. connections



## Convoluted Transfer Hose - Low Profile

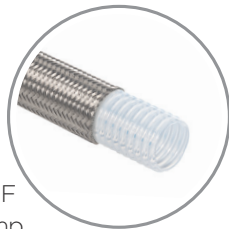
### WCS

White PTFE fluoropolymer low profile helical convoluted I.D. hose; 304 high tensile strength stainless steel braid reinforcement

**Size range** : 3/8" to 2" I.D.

**Temperature rated** : -65°F to +400°F

**End connections** : Permanent crimp style



### WCSS:

Platinum cured, extruded silicone covered stainless steel reinforced (white) PTFE fluoropolymer low profile convoluted I.D. hose

**Size range** : 3/8" to 2" I.D.

**Temperature rated** : -65°F to +400°F

**End connections** : Permanent crimp style



### BCS

Anti-static (black) PTFE low profile version of WCS, shares size range and end connections

**Size range** : 3/8" to 2" I.D.

**Temperature rated** : -65°F to +400°F

**End connections** : Permanent crimp style



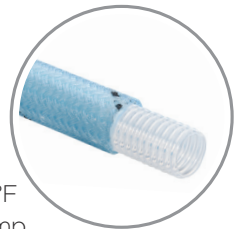
### WCP

White PTFE fluoropolymer low profile helical convoluted I.D. hose. U.V. stabilized polypropylene braid reinforcement

**Size range** : 1/2" to 1" I.D.

**Temperature rated** : -40°F to +250°F

**End connections** : Permanent crimp style



### BCP:

Anti-static (black) PTFE low profile version of WCP, shares size range and end connections

**Size range** : 1/2" to 1" I.D.

**Temperature rated** : -40°F to +250°F

**End connections** : Permanent crimp style



### Chlorine Hose

PTFE convoluted inner tube with PVDF braid manufactured in accordance with Chlorine Institute Pamphlet 6 specifications

**Size range** : 1/2" to 1-1/2" I.D.

**Temperature rated** : -40°F to +120°F

**End connections** : Permanent crimp style (high nickel and PVDF)



# Versilon™ Fitting End Connections

## Sanitary

Sanitary clamp style, 316L stainless steel  
**Style 10**



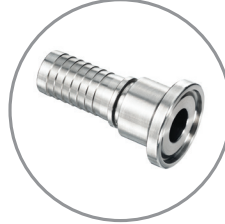
Sanitary "jump" styles clamp style, 316L stainless steel  
**Style 10U** - 1 step up  
**Style 10UU** - 2 steps up



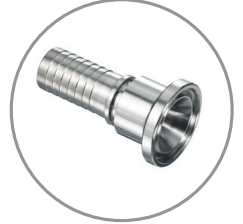
Sanitary clamp style 90° elbow, 316L stainless steel  
**Style 10L**  
Sanitary & hose barb same size



Sanitary "mini", 316L stainless steel  
**Style 11**



Sanitary "mini" jump size, 316L stainless steel  
**Style 11U**



Sanitary 90° elbow "mini", 316L stainless steel  
**Style 11L**  
Mini sanitary & hose barb same size



Bevel seat/nut, 316L stainless steel insert 304 stainless steel nut  
**Style 20**



Note: 45° elbows also available full size (style 10L45) & "mini" size (style 11L45)

Sanitary "maxi" size for Sani-Tech® Rigid connections, 316L stainless steel  
**Style 25**



Bevel seat, male threads, 316L stainless steel  
**Style 40**



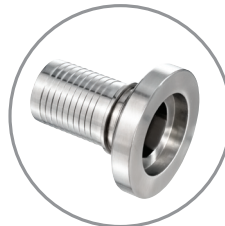
Butt Weld, sanitary tube size 316L stainless steel  
**Style 41**



Male I-line, 316L stainless steel  
**Style 50**



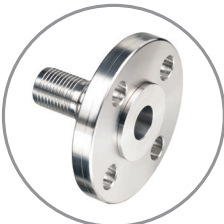
Female I-line, 316L stainless steel  
**Style 51**



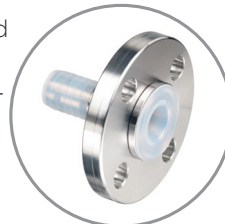
**Fittings made from other materials such as high nickel alloys and PVDF are available. Contact us for more information.**

## Flanged Connections Class 150 Lap Joint Flanges Shown • Class 300 Lap Joint Flanges Available

316L Flange retainer with: 304 or 316L lap joint flanges  
**Style 12S6** - 316L flange  
**Style 12S4** - 304 flange



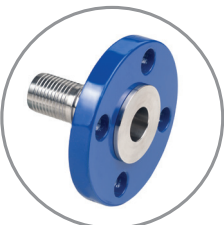
PFA Encapsulated flange retainer: 304 or 316L stainless steel lap joint flange  
**Style 12T6** - 316L flange  
**Style 12T4** - 304 flange



"Flare-Thru" flange retainer: fluoropolymer lined  
**Style 12FTC** - epoxy coated carbon steel  
**Style 12FT6** - 316L flange  
**Style 12FT4** - 304 flange



Epoxy coated carbon steel lap joint flange  
**Style 12C** - epoxy carbon steel flange



PFA encapsulated flange retainer: epoxy coated carbon steel



C/F for hose type with Flare-Thru flange option  
Note: Class 300# flanged assemblies must be cross checked for hose/fitting pressure rating

## Male Cam & Groove

316L stainless steel male cam & groove

**Style 17** - Male & hose barb same size

**Style 17U** - Male is one size larger than Hose Barb



Chemflur® PFA Encapsulated male cam & groove

**Style 17T** - Male & hose barb same size



Fluoropolymer encapsulated male cam & groove fittings available on selected hose styles & sizes

Consult factory for availability

## Female Cam-Lock (Cam & Groove)

Female cam-lock, swivel style non-locking arms 316L insert 316 stainless steel body

**Style 16**



Female cam-lock, swivel style non-locking arms PFA encapsulated insert with 316 stainless steel body

**Style 16T**



Female cam-lock swivel style locking arms 316L insert 316 stainless steel body

**Style 16LK**



Female cam-lock, swivel style locking arms PFA encapsulated insert 316 stainless steel body

**Style 16TLK**



Female cam-lock, swivel style locking and nonlocking arms "Flare-Thru" option

**Style 16FTLK** - locking arms

**Style 16FTS6** - non-locking arms



Fluoropolymer Flare-Thru female cam & groove fittings available on selected hose styles & sizes

Consult factory for availability

## Compression, O-Ring and Vacuum

Compression connector 316L stainless steel

**Style 31**

1/4" to 1" Sizes hose barb & connector same size Step-up & step-down sizes available; consult factory



Compression connector w/nut & ferrules 316L stainless steel 1/4" to 1" sizes

**Style 31FN**

Hose barb & connector same size Step-up & step-down sizes available; consult factory



Compression tube adapter 316L stainless steel 1/4" to 1" sizes

**Style 32**

Hose barb & tube same size step-up & step-down sizes available; consult factory



O-ring style 316L stainless steel 1/4"-1/2" sizes

**Style 33**



Vacuum fitting, female 316L stainless steel 1/4" & 1/2" sizes

**Style 34**



Vacuum fitting, male 316L stainless steel 1/4" & 1/2" sizes

**Style 35**



Compression tube adapter w/nut & ferrule 316L stainless steel

1/4" - 1" Sizes available preswaged from factory

**Style 32FN**



## NPT

Male NPT; 316 L stainless steel hex style

**Style 03** - MNPT & hose barb same size



Male NPT jump sizes hex style; 316L stainless steel

**Style 03U** - Step-up

**Style 03D** - Step-down 2-1/2" & larger fittings have "wrench flats"

**Style 04** - Male NPT, plain



Female NPT

**Style 06** - Hex

style; 316L

stainless steel

Hose barb &

female NPT same

size

**Style 05** - Female

NPT, plain



## Unions/Female JIC

Male union 316L

stainless steel

JIC x male NPT

pipe adapter

**Style 08** - Hose

and MNPT barb

same size

**Style 08U** - Step-up

**Style 08D** - Step-down



Female union

316L stainless

steel

JIC x female pipe

adapter

**Style 07** - Same

size FNPT pipe x

hose barb

**Style 07U** - Step-up

**Style 07D** - Step-down



Female JIC swivel

anti-torque style

316L stainless

steel

**Style 02HSN** - JIC

& hose barb same

size



Butt Weld, 316L

stainless

steel "pipe size"

**Style 01**

Pipe size & hose

barb same

size, length & pipe

schedule can be

custom manufactured; consult factory



Female JIC swivel

316L stainless

steel insert, 304

stainless steel

swivel nut

**Style 02** - JIC &

hose barb

same size



## Versilon™ Adapters

PFA encapsulated

316 male cam

& groove x 150#

Lap joint (swivel)

flange adapter

**Style 18T6** - 316L

stainless steel

flange

**Style 18T4** - 304 stainless steel flange



PFA encapsulated

316 male cam &

groove x 150#

lap joint (swivel)

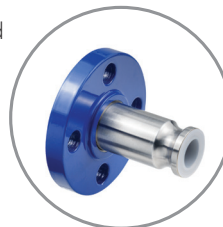
flange adapter

**Style 18TC** -

Epoxy coated

carbon steel flange

Consult factory for 300# flange



PFA encapsulated

316 stainless

steel "spool"

adapter for

connecting two

fluoropolymer-

lined female cam

& groove fittings

**Style 19T**



# Fluoropolymer Hose and Fitting Selection Guide

## VERSILON™

Fluid Performance

Premium quality tubing, hoses and fittings fulfilling a range of demanding certification, performance and safety standards.

## TYGON®

Excellence By Design

Precision-designed tubing for peak performance and regulatory compliance, across a range of specialized fluid transfer applications.



Saint-Gobain  
Life Sciences



### Performance Plastics

210 Harmony Road  
Mickleton, NJ 08056  
USA

Toll Free: 1-800-435-3992  
International: +1 (732) 652-0910  
[www.ics.saint-gobain.com](http://www.ics.saint-gobain.com)

**IMPORTANT:** It is the user's responsibility to ensure the suitability and safety of Saint-Gobain materials for all intended uses. Laboratory, field or clinical tests must be conducted in accordance with applicable requirements in order to determine the safety and effectiveness for use of materials in any particular application. If intended for medical use, it is the user's responsibility to ensure that the materials to be used comply with all applicable medical regulatory requirements.

#### Limitation of Liability

Except for products for which Saint-Gobain (SGPPL) has established a specific written warranty, the products described herein are sold by SGPPL without any guarantee and/or warranty, oral or written. User assumes all risk, if any, including the risk of injury, loss or damage, whether direct, consequential or incidental, arising out of the use, misuse or inability to use these products.

SAINT-GOBAIN DISCLAIMS ALL IMPLIED WARRANTIES OF MERCHANTABILITY AND FITNESS FOR A PARTICULAR PURPOSE.

**NOTE:** Saint-Gobain Corporation does not assume any responsibility or liability for any advice furnished by it, or for the performance or results of any installation or use of the product or of any final product into which the product may be incorporated by the purchaser and/or user.